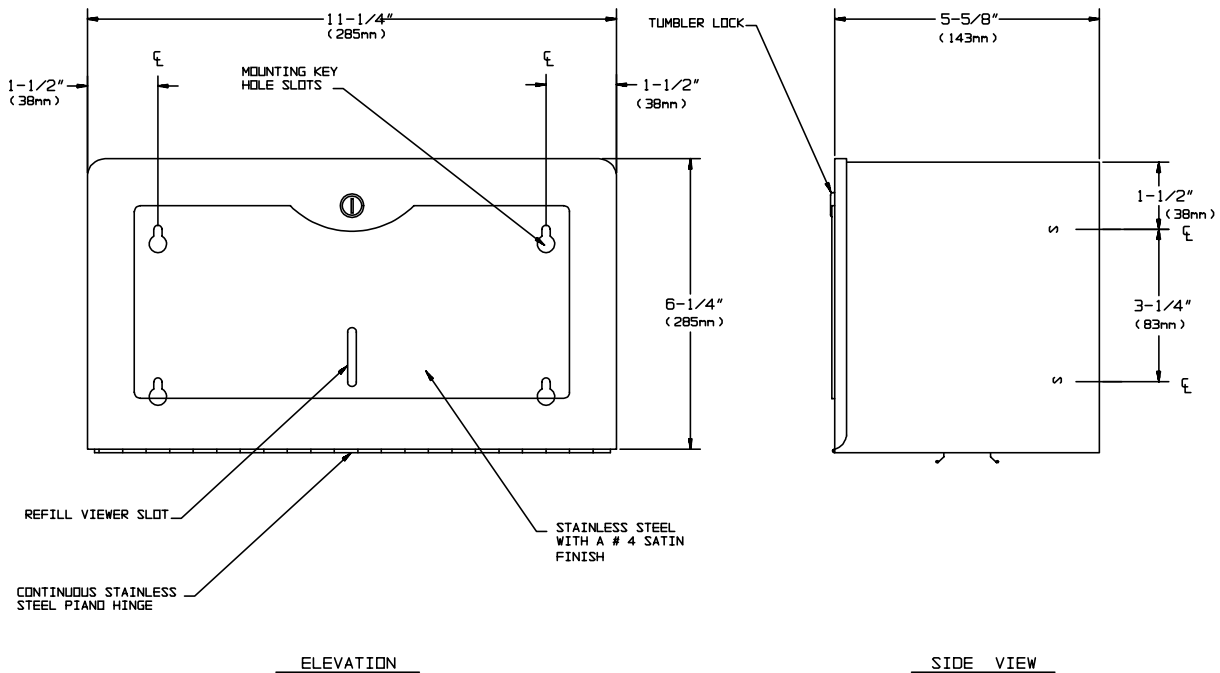


**SURFACE MOUNTED PAPER TOWEL DISPENSER**



**SPECIFICATION**

Surface Mounted Paper Towel Dispenser shall hold and dispense 400 standard single-fold paper towels and shall be fabricated of alloy 18-8 stainless steel, type 304, 22 gauge. Towel dispensing slot shall have a fully deburred edge for snag-free dispensing and user safety. Dispenser door shall be attached to bottom of unit with a full length 3/16" dia. stainless steel multi-staked piano hinge. Structural assembly of body and door components shall be of welded construction. Door shall be provided with a refill view indicator and be held closed with a tumbler lock. All exposed surfaces shall be N° 4 satin finish and be protected during shipment with a PVC film easily removable after installation.

**INSTALLATION**

Unit is surface mounted on wall or partition using N° 10 self tapping screws (by others).

**OPERATION**

Towels are self-feeding until supply is depleted. Unit may be reloaded with a partial load in-place and will continue to feed properly. Low level of towel supply is indicated from 30% capacity to approximately 15% level.