

413 - BLADE RUNNER™ W/DYNA-SHIELD®

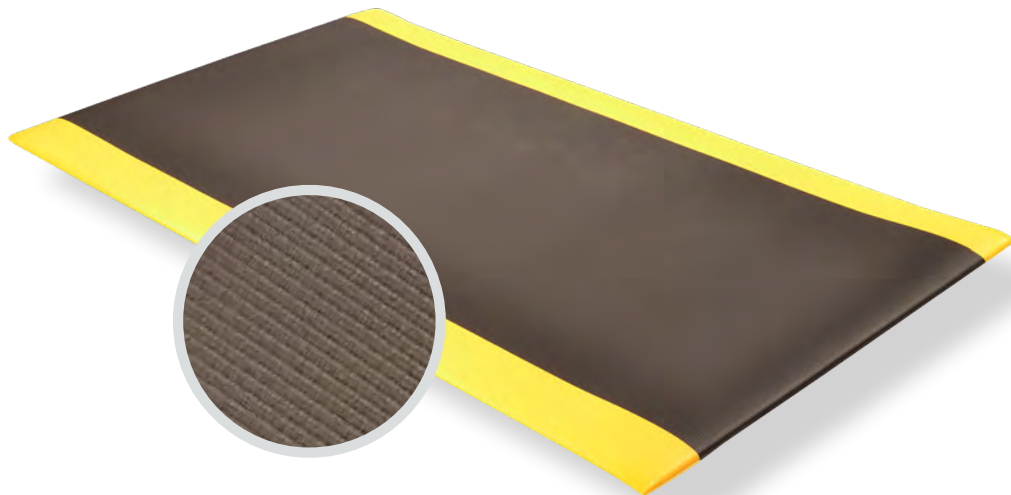
PRODUCT INFORMATION BROCHURE





For over 70 years, the name Notrax® has meant superior quality, service, and innovative products. Now this brand is a cornerstone of Justrite Safety Group, offering the widest selection of products to a variety of markets and applications including entrance mats, anti-fatigue/safety mats, and products designed specifically for use in professional food service environments. Notrax® offers a complete selection of floor matting options to meet any application requirement, quality expectation, and budget.

- **Track record of manufacturing high quality mats for over seventy years**
- **All products are manufactured in ISO certified facilities**
- **Notrax® offers anti-fatigue matting, entrance matting, safety matting, food service matting and specialty mats designed for a variety of industries**

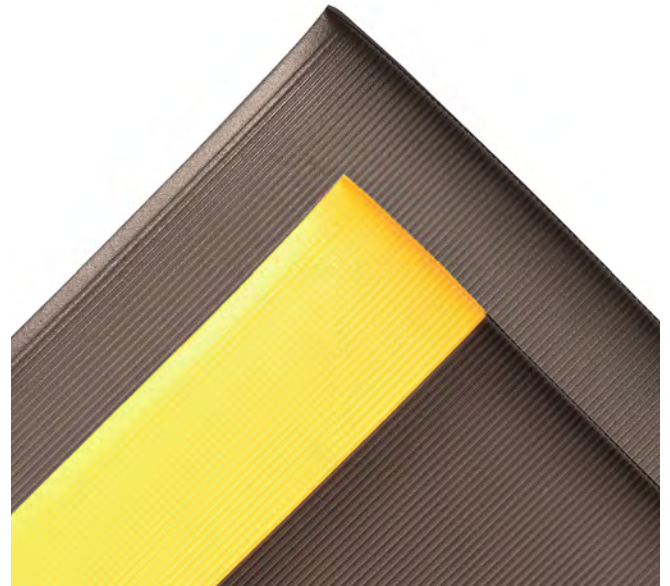


413 - BLADE RUNNER™ W/DYNA-SHIELD® is an anti-fatigue mat that is designed to provide traction with its wide ribs that run down the mat allowing for sure footing and is easy to sweep clean. The NoTrax® exclusive Dyna-Shield® PVC sponge is manufactured with a tough protective top layer that provides long lasting wear and outperforms in tear resistance and tensile strength. Designed for use in medium duty dry work areas.

Material: PVC

Features and Benefits:

- Wide ribs that run down the mat
- PVC foam provides added cushioning comfort
- Exclusive Dyna-Shield® top surface manufactured directly into the mat for long lasting wear.
- Superior tear resistance and tensile strength
- Beveled edges on all 4 sides of all stock, cuts and rolls
- Max length available up to 120 linear feet (minimum 2 rolls , available in increments of 2)
- Tolerances available upon request



MODEL: 413

SPECIFICATIONS

APPLICATIONS

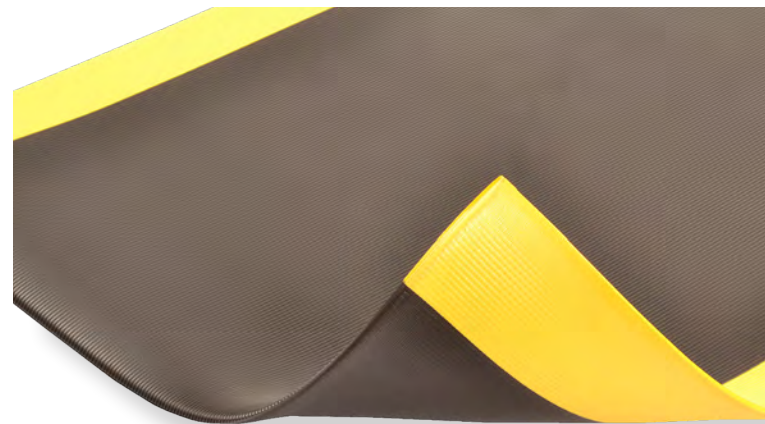
- Dry Workstations
- Assembly Lines
- Packaging Areas
- Service Counters

Stock Sizes	2'x3', 2'x6', 3'x4', 3'x5', 3'x6', 3'x12'
Roll Sizes	2'x60', 3'x60', 4'x60'
Thickness	1/2"
Cut Lengths	2', 3', and 4' widths (up to 60' long)
Colors	 Black  Black/Yellow

Performance:	Good	Better	Best	Superior
Wear Resistance	██████████		██████	██
Anti-fatigue Performance	██████████		██████	██
Slip Resistance	██████████		██████	██



Anti-Fatigue Cut Lengths Insulation



TESTING DATA

Test	Test Description	Results
ASTM D-3574	Compression Deflection (@50%)	Thickness: 0.668 Compressed Load: 6.4 lbs./in 2
ATSM D3884-01	Abrasion Resistance (Measured in weight loss)	@500 cycles: .87 Grams (2.7%) @5000 cycles: 8.8 Grams (26.9%)
ASTM C-1028	Static Coefficient of Friction	Dry: 0.68 Wet: 0.50
ASTM D-1004-94a-03	Tear Resistance(Measured in lbs.)	20.1 lbs.
ASTM D-412	Elongation (Avg.)	Elongation: 28%

*Testing performed by an independent test laboratory.

