

# 650 - NIRU<sup>®</sup> CUSHION-EASE<sup>®</sup>

PRODUCT INFORMATION BROCHURE

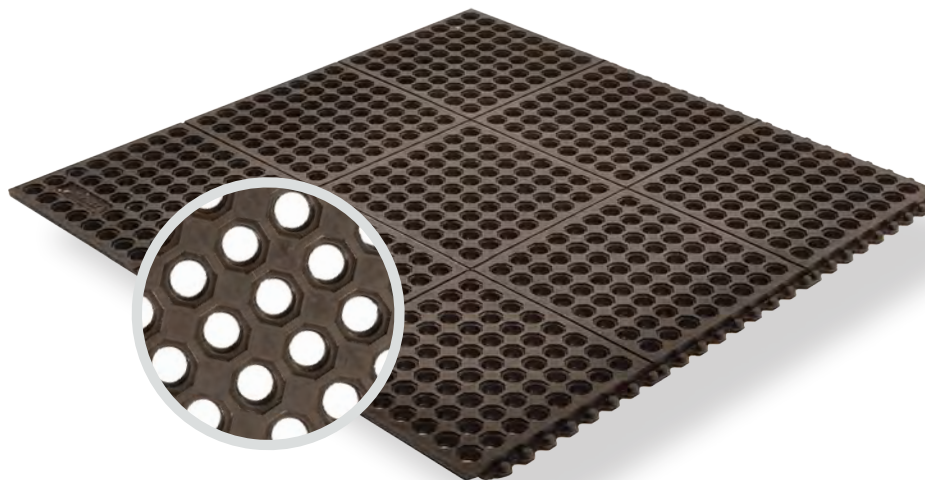






For over 70 years, the name Notrax® has meant superior quality, service, and innovative products. Now this brand is a cornerstone of Justrite Safety Group, offering the widest selection of products to a variety of markets and applications including entrance mats, anti-fatigue/safety mats, and products designed specifically for use in professional food service environments. Notrax® offers a complete selection of floor matting options to meet any application requirement, quality expectation, and budget.

- **Track record of manufacturing high quality mats for over seventy years**
- **All products are manufactured in ISO certified facilities**
- **Notrax® offers anti-fatigue matting, entrance matting, safety matting, food service matting and specialty mats designed for a variety of industries**



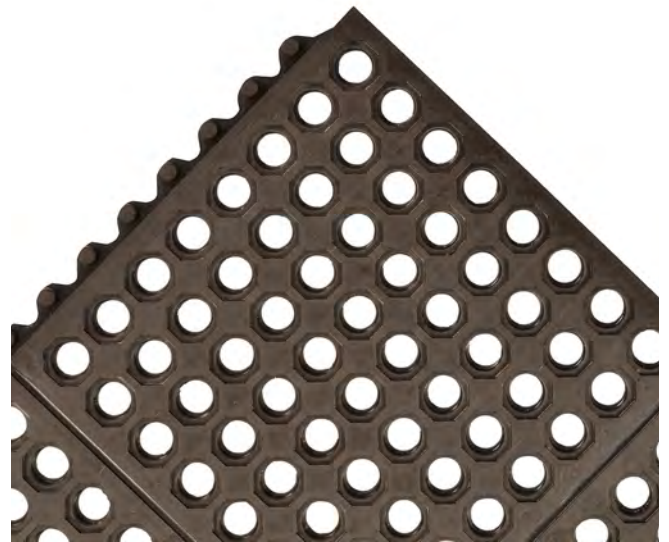
**650 - NIRU® CUSHION-EASE®** is a high performance modular anti-fatigue matting system with a drainage top anti-slip surface texture and a multi-nib backing for comfort and ergonomic support of the mat. Made of 100% nitrile rubber compound that provides the highest resistance to chemicals, cutting fluids, animal fats, oils and greases. Large holes provide excellent drainage and aeration leaving a dry, clean work area. All Cushion-Ease® mats have a male/female interlocking system and are compatible with Notrax® M.D. Ramp System® for easy on-site custom configurations and trip-resistant platforms.

**Material:** Nitrile Rubber

**Features and Benefits:**

- Resilient nitrile rubber compound and unique support design offers exceptional fatigue relief
- Large hole drainage design keeps moisture and debris free
- Easy to snap together mats on-site for custom work station platforms
- Nitrile provides highest level of resistance to chemicals, oils and greases
- Compatible with any Cushion-Ease® family mats
- 551 M.D. Ramp System® and 552 extra wide M.D.-X Ramp System™ available
- 650FR fire retardant is available

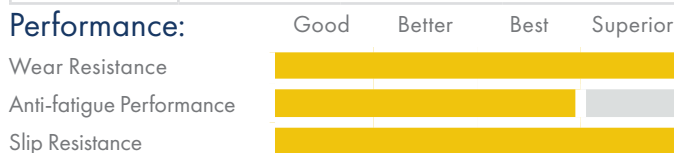
**⚠ WARNING:** This product can expose you to chemicals including diisodecyl phthalate which is known to the State of California to cause birth defects or reproductive harm, and 2-mercaptobenzothiazole which is known to the State of California to cause cancer. For more information, visit [www.P65Warnings.ca.gov](http://www.P65Warnings.ca.gov)



MODEL: 650

## SPECIFICATIONS

Stock Sizes	3'x3', 3'x5'
Thickness	3/4"
Colors	 Black



- APPLICATIONS**
- Workstations
  - Packaging Areas
  - Assembly Lines
  - Welding Areas



									
Anti-Fatigue	Anti-Slip	Cleaning	Drainage	Food Processing	Food Service	Modular System	Oil/Grease Resistant	Flame Retardant	Welding

# TESTING DATA

Test	Test Description	Results
Compression Deflection	Test specimen is subjected to varying compression load levels and the resulting deflection was measured. The greater the deflection, the better the anti-fatigue properties. (Inches)	.146" (20 lbs/sq. inch) .209" (40 lbs/sq. inch)
Coefficient of Friction ASTM C1028-96	A neolite heel assembly with a predetermined load is pulled horizontally with a dynamometer to measure the force required to cause the assembly to slip.	.85
Abrasion Resistance ASTM D3884-01	Test specimen is subjected to the rubbing action of two abrading wheels under controlled conditions. Results measured in Weight loss (Grams)	0.90 Grams (0.9%)
Elongation ASTM D412	Test specimen is stretched at a specified rate until breaking point. The results are measured in weight needed to break, and % of size increase at breaking point.	54.8 lbs 146.7% (average of 5 specimens)
Hardness ASTM D2240-02	The hardness of a test sample is measured by means of a type A Shore Durometer. It measures the penetration of its specified indenter forced into the material under specified conditions	55

\*Testing performed by an independent test laboratory.

