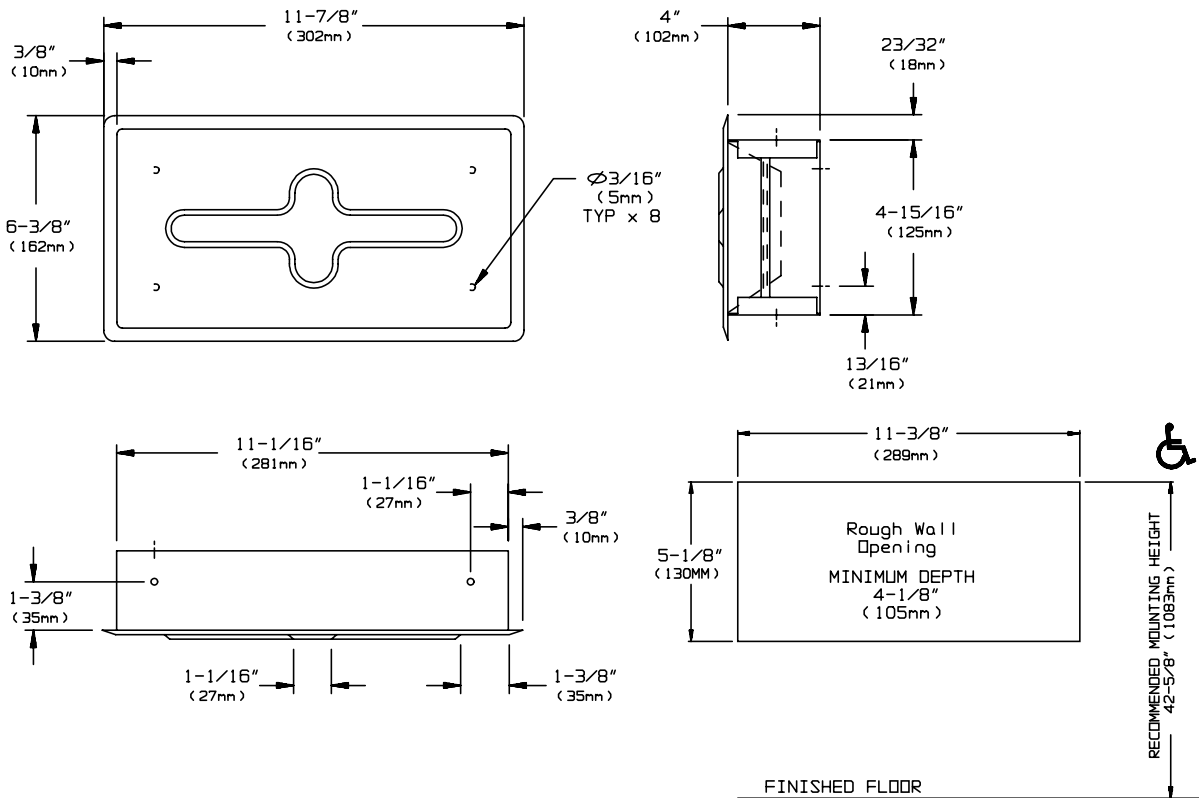


MODEL No: 02594-SS

ISSUED: 1-87

REVISED: 5-05

RECESSED FACIAL TISSUE DISPENSER



SPECIFICATION

Recessed Facial Tissue Dispenser shall hold and dispense 300 two-ply sheets or 600 single sheets. Cover shall be fabricated of alloy 18-8 stainless steel, type 304, 22gauge with N°4 satin finish and be protected during shipment with a PVC film easily removable after installation. Cover shall be held closed by hooks located on each side and shall correspond to clips located on side walls of dispenser body. Cover shall be supplied with tissue dispensing slot and shall be smooth and rounded. Cabinet shall have mounting holes located all around.

INSTALLATION

For general utility mount dispenser 48"- 60" (1219mm-1524mm) above finished floor (AFF) from top of dispenser. Secure dispenser with screws (by others) through mounting holes in rear of cabinet. For compliance with ADA Accessibility Guidelines, install unit so that tissue dispensing slot is 54" (1372mm) maximum AFF if clear floor side reach access is provided or 48" (1219mm) maximum AFF if clear floor forward reach access is only provided or 46" (1168mm) maximum AFF if side reach over obstruction (i.e. vanity) is only provided.

Rough Wall Opening (RWO) required is..... 11-3/8" W x 5-1/8" H x 4-1/8" D (289mm x 130mm x 105mm)

OPERATION

Tissues are manually retrieved through the tissue dispensing slot. To refill the dispenser, remove the cover by disengaging the hooks from the side wall clips and reload with fresh supply box. Fit the first sheet through the slot to start, then replace the cover. Supply is replenished on a cycle determined by maintenance needs.