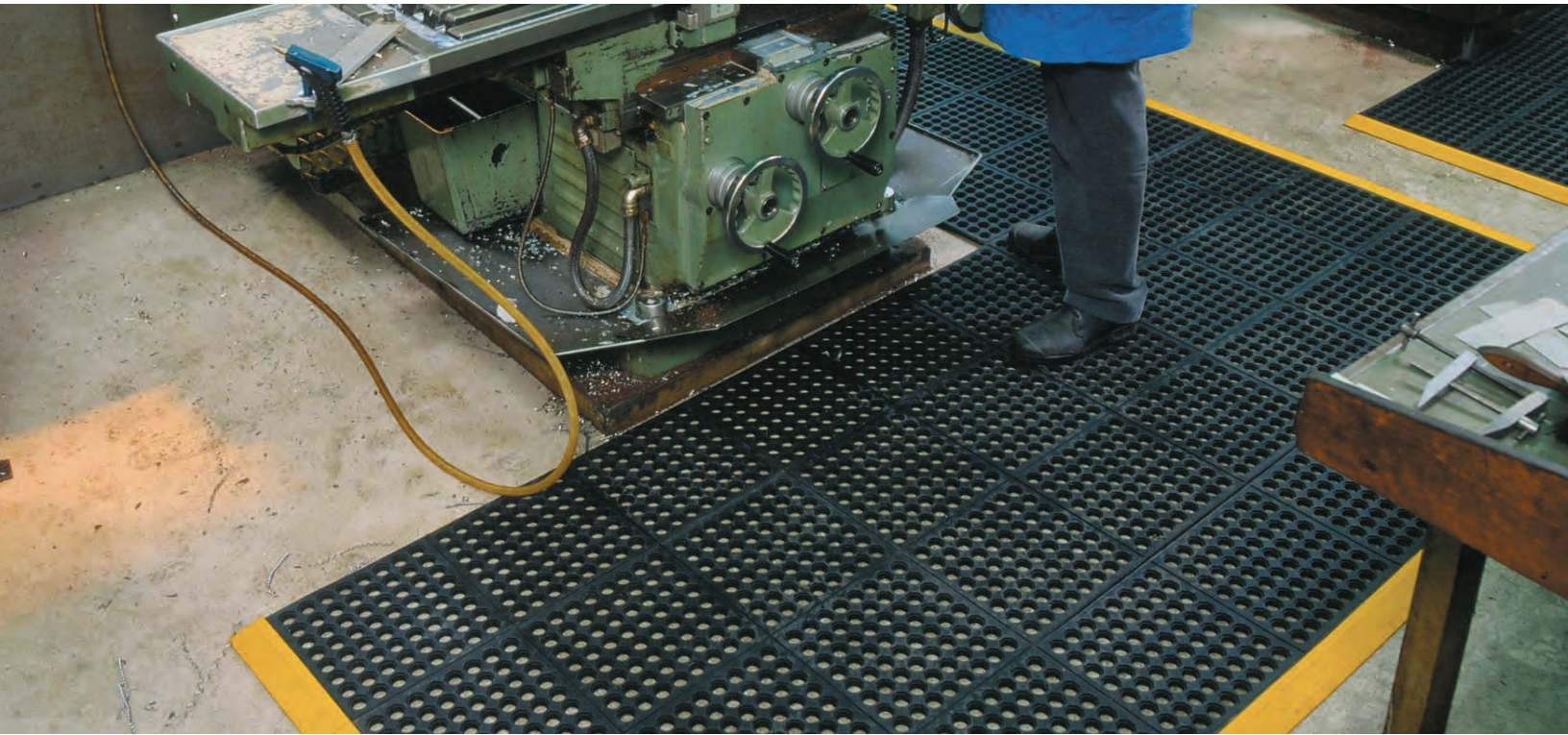


550 - CUSHION-EASE®

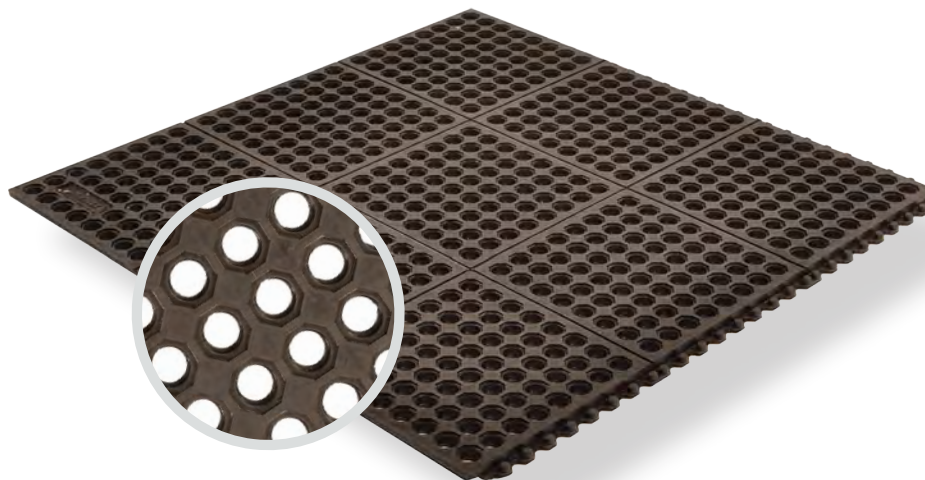
PRODUCT INFORMATION BROCHURE





For over 70 years, the name Notrax® has meant superior quality, service, and innovative products. Now this brand is a cornerstone of Justrite Safety Group, offering the widest selection of products to a variety of markets and applications including entrance mats, anti-fatigue/safety mats, and products designed specifically for use in professional food service environments. Notrax® offers a complete selection of floor matting options to meet any application requirement, quality expectation, and budget.

- **Track record of manufacturing high quality mats for over seventy years**
- **All products are manufactured in ISO certified facilities**
- **Notrax® offers anti-fatigue matting, entrance matting, safety matting, food service matting and specialty mats designed for a variety of industries**

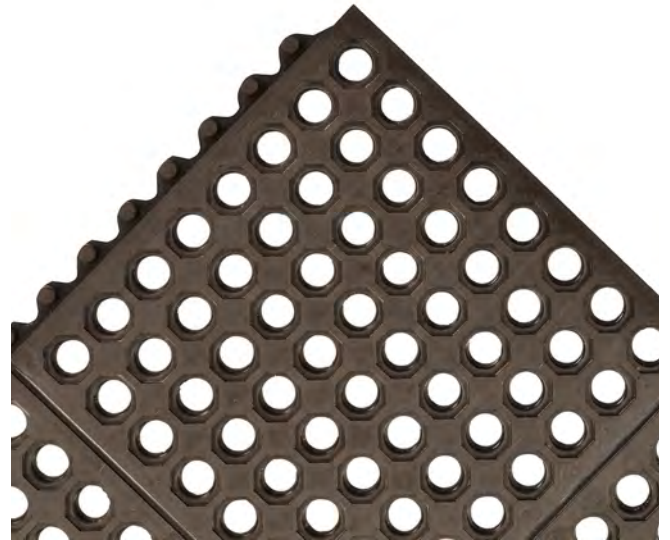


550 CUSHION-EASE® is a modular anti-fatigue matting system made with a resilient rubber compound with a drainage top anti-slip surface texture and a multi-nib backing for comfort and ergonomic support of the mat. Large holes provide excellent drainage and aeration leaving a dry, clean work area. All Cushion-Ease® mats have a male/female interlocking system and are compatible with Notrax® M.D. Ramp System® for easy on-site custom configurations and trip-resistant platforms.

Material: Natural Rubber

Features and Benefits:

- Resilient rubber compound and unique support design offers exceptional fatigue relief
- Large hole drainage design keeps moisture and debris free
- Easy to snap together mats on-site for custom work station platforms
- Rubber compound is grease resistant
- Compatible with any Cushion-Ease® family mats
- 551 M.D. Ramp System® and 552 extra wide M.D.-X Ramp System™ available

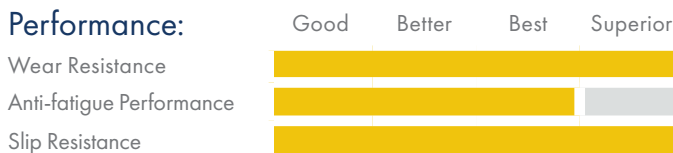


MODEL: 550

⚠ WARNING: This product can expose you to chemicals including diisodecyl phthalate which is known to the State of California to cause birth defects or reproductive harm, and 2-mercaptobenzothiazole which is known to the State of California to cause cancer. For more information, visit www.P65Warnings.ca.gov

SPECIFICATIONS






Stock Sizes	3'x3', 3'x5'
Thickness	3/4"
Colors	 Black



APPLICATIONS

- Workstations
- Packaging Areas
- Assembly Lines
- Welding Areas



				
Anti-Fatigue	Anti-Slip	Cleaning	Drainage	Modular System

TESTING DATA

Test	Test Description	Results
-	Compression Deflection	@ 20 lbs./in2: 0.449 in. @ 40 lbs./in2: 0.626 in.
ATSM D3884-01	Abrasion Resistance (Measured in weight loss)	@500 cycles: 1.44 Grams (4.1%) @1000 cycles: 7.62 Grams (21.9%)
ASTM C-1028	Static Coefficient of Friction	Dry: 0.83 Wet: 0.79
ASTM D-1004-94a-03	Tear Resistance(Measured in lbs.)	15.0 lbs.
ASTM D-412	Breaking Load & Elongation (Avg.)	Breaking Load: 28.5lbs./2in Elongation: 74%

*Testing performed by an independent test laboratory.

