

# **735 - ROUND RIB RUNNER**

PRODUCT INFORMATION BROCHURE

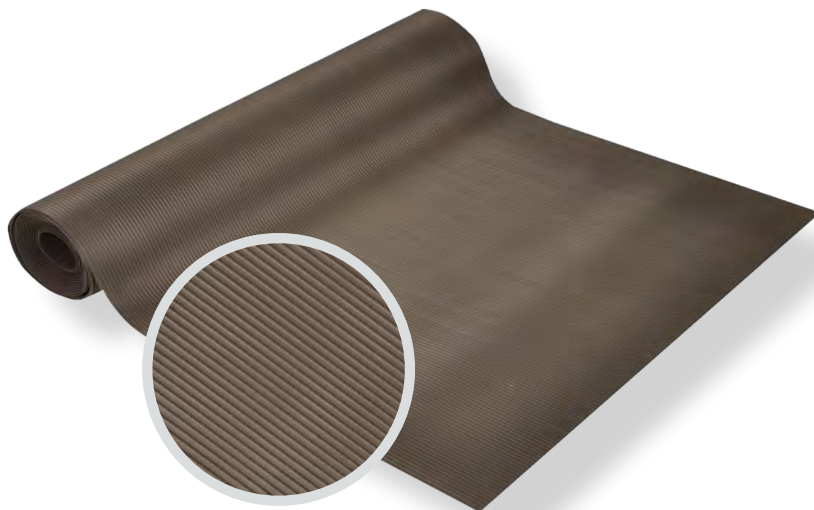






For over 70 years, the name Notrax® has meant superior quality, service, and innovative products. Now this brand is a cornerstone of Justrite Safety Group, offering the widest selection of products to a variety of markets and applications including entrance mats, anti-fatigue/safety mats, and products designed specifically for use in professional food service environments. Notrax® offers a complete selection of floor matting options to meet any application requirement, quality expectation, and budget.

- **Track record of manufacturing high quality mats for over seventy years**
- **All products are manufactured in ISO certified facilities**
- **Notrax® offers anti-fatigue matting, entrance matting, safety matting, food service matting and specialty mats designed for a variety of industries**



**735 - ROUND RIB RUNNER** is wide spaced and rounded rib design of this vinyl runner allows for easy clean-up while providing sure footing and floor protection. Made of durable vinyl, this runner has a low profile allowing for easy on/off cart traffic. Round Rib Runner is recommended for applications where safety and slip protection is needed with minimal anti-fatigue value such as aisles, warehouses, vending areas, and industrial passageways.

**Material:** Vinyl

**Features and Benefits:**

- Heavy-duty vinyl round rib surface pattern
- Made of 100% recycled vinyl materials
- Wide-spaced rounded rib design is easy to sweep clean
- Provides barrier to cold floors
- Low profile to eliminate trip hazards and allow for cart traffic

**⚠ WARNING:** This product can expose you to chemicals including di-2-ethylhexyl phthalate and/or diisononyl phthalate which is known to the State of California to cause cancer, birth defects or reproductive harm. For more information, visit [www.P65Warnings.ca.gov](http://www.P65Warnings.ca.gov)





MODEL: 735

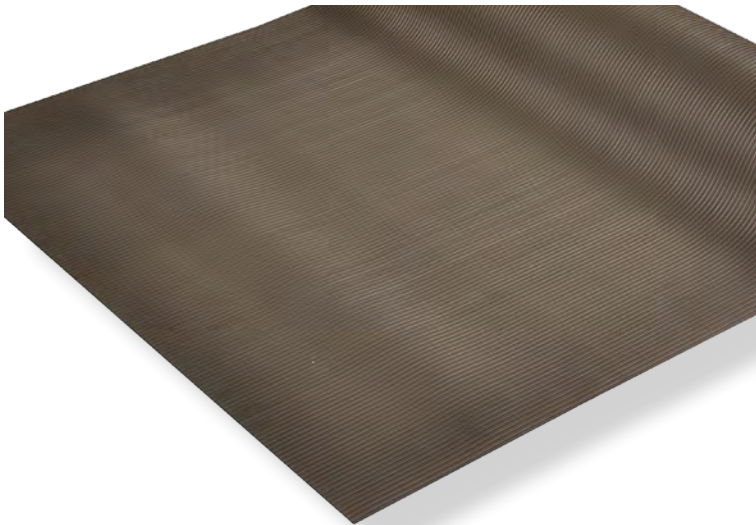
SPECIFICATIONS

APPLICATIONS

- Aisle Ways
- Warehouses
- Vending Areas
- Cart Traffic

Roll Sizes	2'x105', 3'x105', 4'x105'		
Thickness	1/8"		
Cut Lengths	2', 3', and 4' widths (up to 105' long)		
Colors	 Black	 Grey	

Performance:	Good	Better	Best	Superior
Wear Resistance	<div></div>	<div></div>	<div></div>	<div></div>
Anti-Fatigue Performance	<div></div>	<div></div>	<div></div>	<div></div>
Slip Resistance	<div></div>	<div></div>	<div></div>	<div></div>



Anti-Slip



Cut Lengths



Floor Protection



Insulation



# TESTING DATA

Test	Test Description	Results
Coefficient of Friction ASTM C1028-96	A neolite heel assembly with a predetermined load is pulled horizontally with a dynamometer to measure the force required to cause the assembly to slip.	.68
Abrasion Resistance ASTM D3884-01	Test specimen is subjected to the rubbing action of two abrading wheels under controlled conditions. Results measured in Weight loss (Grams)	0.37 Grams
Elongation ASTM D412	Test specimen is stretched at a specified rate until breaking point. The results are measured in weight needed to break, and % of size increase at breaking point.	150%
Hardness ASTM D2240-02	The hardness of a test sample is measured by means of a type A Shore Durometer. It measures the penetration of its specified indenter forced into the material under specified conditions	88

\*Testing performed by an independent test laboratory.

