

# **750 - V-GROOVE CORRUGATED RUNNER™ - RUBBER**

PRODUCT INFORMATION BROCHURE

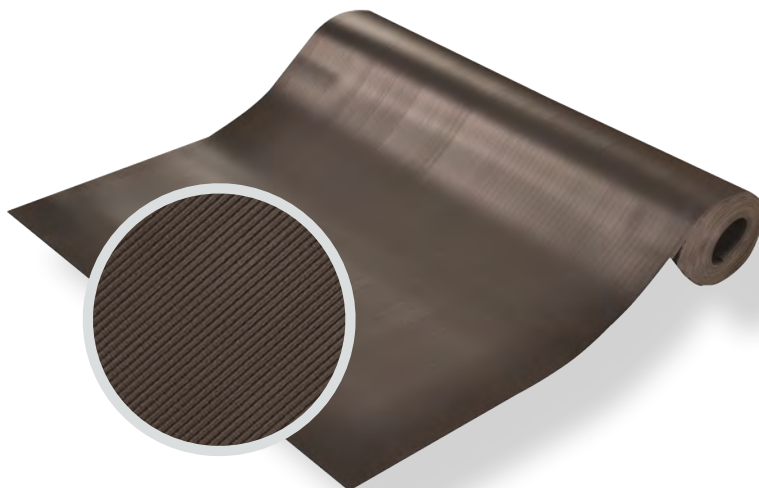






For over 70 years, the name Notrax® has meant superior quality, service, and innovative products. Now this brand is a cornerstone of Justrite Safety Group, offering the widest selection of products to a variety of markets and applications including entrance mats, anti-fatigue/safety mats, and products designed specifically for use in professional food service environments. Notrax® offers a complete selection of floor matting options to meet any application requirement, quality expectation, and budget.

- **Track record of manufacturing high quality mats for over seventy years**
- **All products are manufactured in ISO certified facilities**
- **Notrax® offers anti-fatigue matting, entrance matting, safety matting, food service matting and specialty mats designed for a variety of industries**



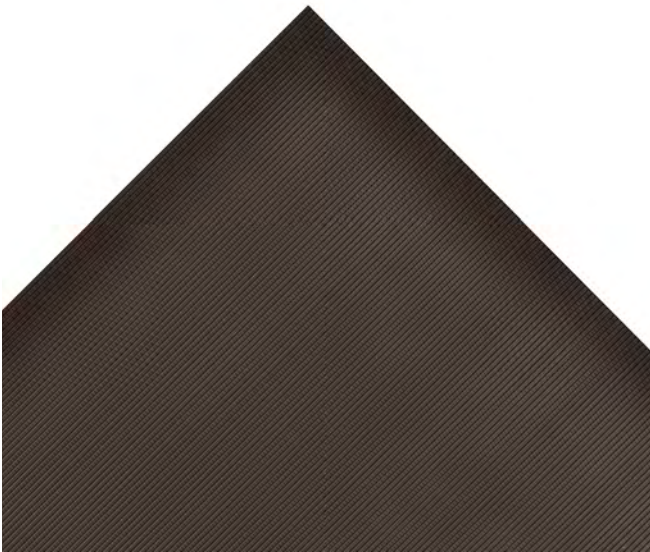
**750 - V-GROOVE CORRUGATED RUNNER™ - RUBBER** is made from a long-lasting rubber compound that features a rib-tooth design and provides sure footing and floor protection. It also creates a barrier to cold flooring substrates, and has a silencing effect over noisy tile. The low profile matting allows for easy on/off cart traffic and can also be used as a liner for maintenance and tool carts.

**Material:** Rubber

**Features and Benefits:**

- Corrugated rib-tooth design improves traction
- Insulates floor and creates a silencing effect
- Low profile allows for easy on/off cart traffic
- Utilizes a rubber compound
- Made from 100% recycled materials

**⚠ WARNING:** This product can expose you to chemicals including di-2-ethylhexyl phthalate and/or diisononyl phthalate which is known to the State of California to cause cancer, birth defects or reproductive harm. For more information, visit [www.P65Warnings.ca.gov](http://www.P65Warnings.ca.gov)



MODEL: 750

**SPECIFICATIONS**

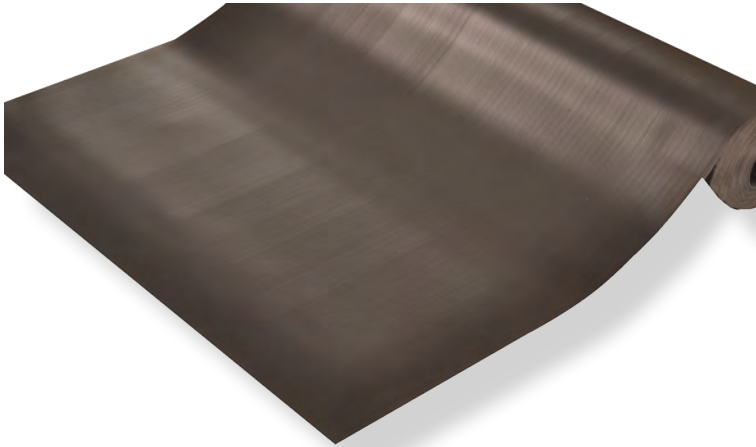
**APPLICATIONS**

- Aisle Ways
- Warehouses
- Vending Areas
- Cart Traffic

Roll Sizes	2'x75', 3'x75', 4'x75', 6'x75', 2'x150', 3'x150', 4'x150'
Thickness	1/8"
Cut Lengths	2', 3', 4 and 6' widths (up to 105' long)
Colors	<div><div></div>Black</div>

**Performance:**

	Good	Better	Best	Superior
Wear Resistance	<div></div>	<div></div>	<div></div>	<div></div>
Anti-fatigue Performance	<div></div>	<div></div>	<div></div>	<div></div>
Slip Resistance	<div></div>	<div></div>	<div></div>	<div></div>



Anti-Slip



Cut Lengths



Floor Protection



Insulation



# TESTING DATA

Test	Test Description	Results
Coefficient of Friction ASTM C1028-96	A neolite heel assembly with a predetermined load is pulled horizontally with a dynamometer to measure the force required to cause the assembly to slip.	.73
Abrasion Resistance ASTM D3884-01	Test specimen is subjected to the rubbing action of two abrading wheels under controlled conditions. Results measured in Weight loss (Grams)	5.89 Grams

\*Testing performed by an independent test laboratory.

