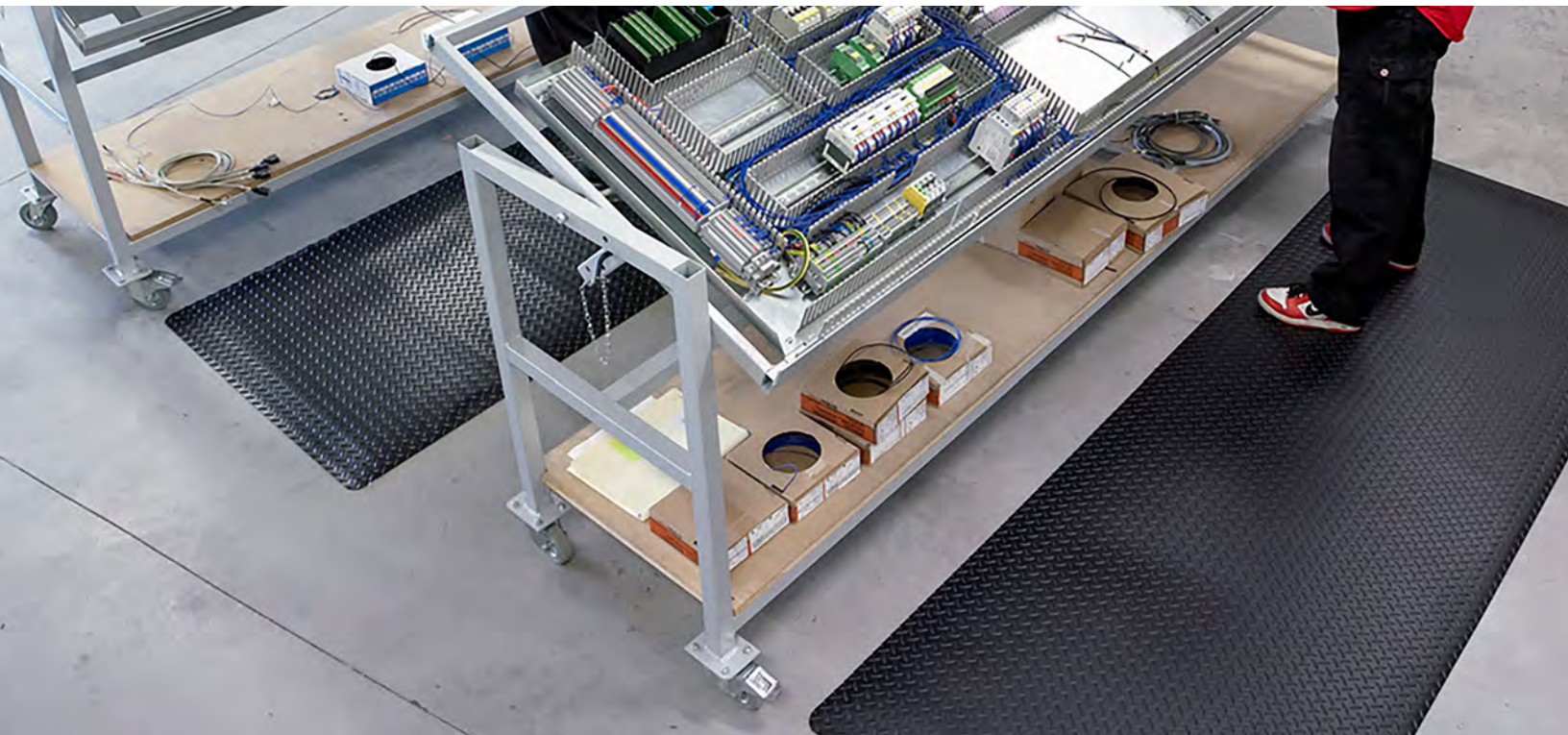


# 826 - DIAMOND STAT™

PRODUCT INFORMATION BROCHURE

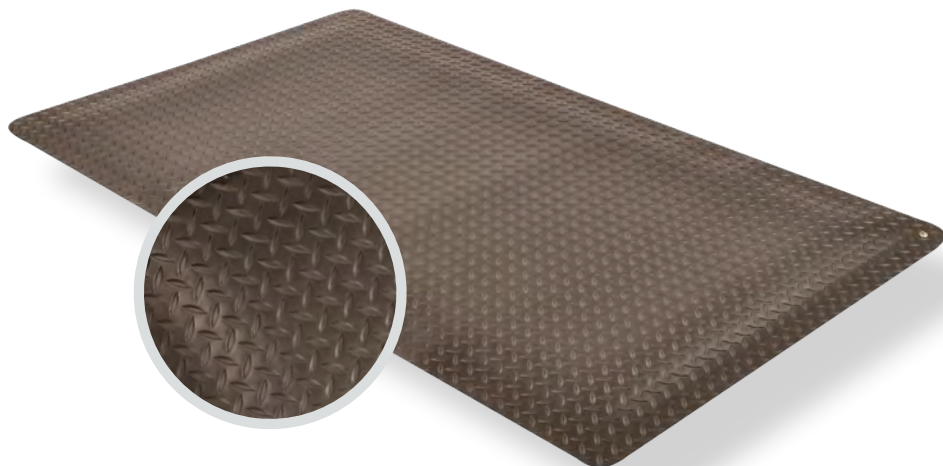






For over 70 years, the name Notrax® has meant superior quality, service, and innovative products. Now this brand is a cornerstone of Justrite Safety Group, offering the widest selection of products to a variety of markets and applications including entrance mats, anti-fatigue/safety mats, and products designed specifically for use in professional food service environments. Notrax® offers a complete selection of floor matting options to meet any application requirement, quality expectation, and budget.

- **Track record of manufacturing high quality mats for over seventy years**
- **All products are manufactured in ISO certified facilities**
- **Notrax® offers anti-fatigue matting, entrance matting, safety matting, food service matting and specialty mats designed for a variety of industries**



**826 - DIAMOND STAT™** is a dissipative/anti-static mat designed to absorb static electricity. The mat drains static electricity from the worker keeping sensitive circuitry from being damaged. The durable vinyl diamond-plate design provides non-directional traction and is easy to clean. Diamond Stat™ top surface is combined with a dense closed cell foam base utilizing Notrax® exclusive UniFusion™ technology. This virtually eliminates the possibility of delamination. All Notrax® laminate floor mats come standard with RedStop™, a uniquely engineered non-slip backing technology that eliminates the slipping and sliding of floor mats on smooth surface flooring such as vinyl composite tile, painted or epoxy coated concrete, vinyl sheet flooring, carpet, and ceramic tile.

**Material:** Vinyl Surface With a Dense Closed Cell Foam Base

### Features and Benefits:

- Electrically conductive PVC diamond plate top surface is combined with a dense closed cell PVC foam base
- Diamond-plate surface texture provides added traction
- UniFusion™ bond guaranteed for the life of the mat
- Redstop™ non-slip backing to reduce mat slippage
- Beveled edges on all 4 sides
- Certified by the NFSI (National Floor Safety Institute)
- RG 104 - 10<sup>6</sup> Ω; RP 104 - 10<sup>6</sup> Ω
- Grounding cord included, required



MODEL: 826



**WARNING:** This product can expose you to chemicals including di-2-ethylhexyl phthalate and/or diisononyl phthalate which is known to the State of California to cause cancer, birth defects or reproductive harm. For more information, visit [www.P65Warnings.ca.gov](http://www.P65Warnings.ca.gov)

- APPLICATIONS**
- Assembly Lines
  - Testing Areas
  - Electronic Areas
  - Workstations

## SPECIFICATIONS

Stock Sizes	2'x3', 3'x5', 3'x12'
Roll Sizes	2'x75', 3'x75', 4'x75'
Thickness	9/16"
Cut Lengths	2', 3' and 4' widths (up to 75' long)
Colors	 Black

**Performance:**

	Good	Better	Best	Superior
Wear Resistance	██████████			██████████
Anti-fatigue Performance	██████████			██████████
Slip Resistance	██████████			██████████



Anti-Fatigue



Anti-Slip



Anti-static



Custom



Insulation

# TESTING DATA

Test	Test Description	Results
ASTM C-1028-96	Static Coefficient of Friction	Dry: 0.49
-	Compression Deflection	@ 20 lbs/in2: 0.181 @ 40 lbs/in2: 0.264
ASTM D-1004-94a-03	Tear Strength	27.6 lbs
ASTM D-2240	Durometer (Shore A)	75
ASTM D-1894-01	Modified Slip Test: Avg. C.O.F. (Coefficient of Friction)	VCT: 0.790 Painted Concrete: 0.760 Vinyl Flooring: 0.670 Epoxy Painted Concrete: 0.740
ASTM D-2859/CPSC FF-170	Surface Flammability/Carpets and Rugs	Pass
ASTM D-903-98	Peel or Stripping strength of Adhesive Bond	@ 0°: Avg: 4.6 lbs/in2 @ 140°: Avg: 0.8 lbs/in2
ANSI/ESD 7.1	Protection of Electrostatic Discharge of Susceptible Items - Flooring Materials (50% relative humidity)	Surface/Ground: Avg: 7.1 x 106 Ohms Surface/Surface: Avg: 1.3 x 107 Ohms

\*Testing performed by an independent test laboratory.

