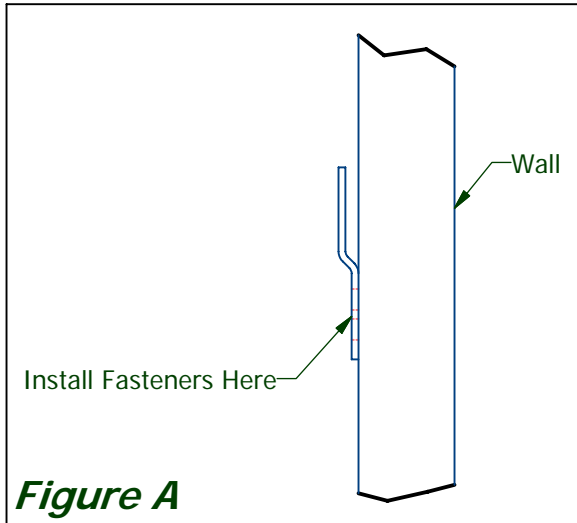


WALL HUNG SORT MODULE INSTALLATION INSTRUCTIONS

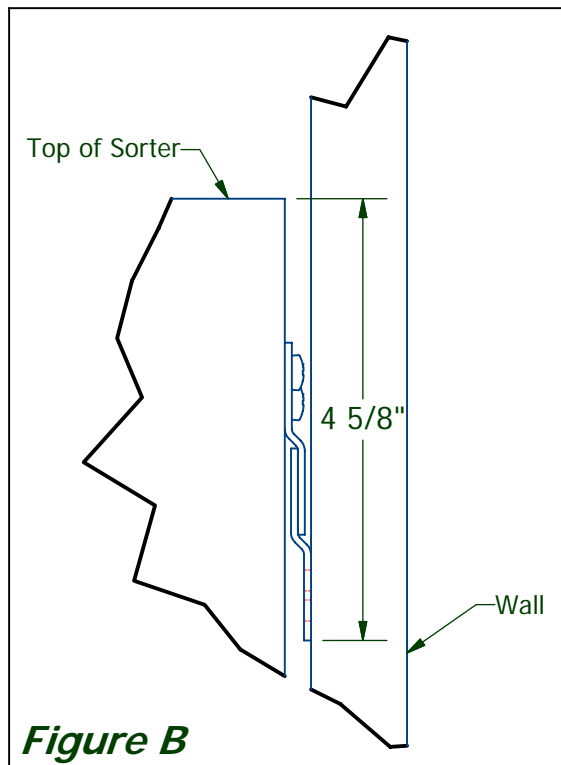


NOTE

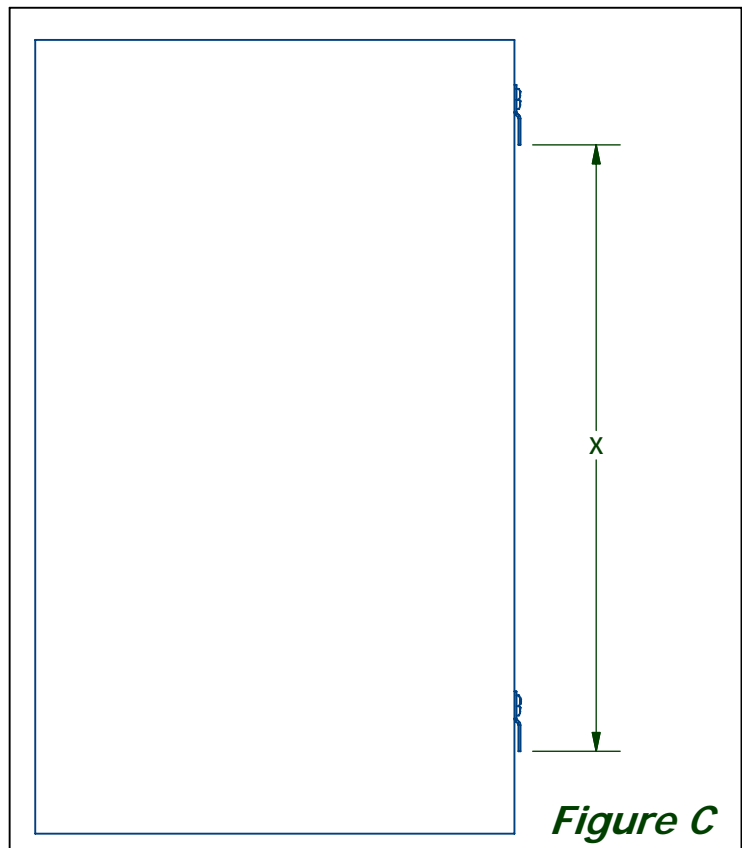
Fasteners to secure unit to wall must be supplied by others. Be sure appropriate fastener is used to accommodate loaded unit.

Step 1: To install Sorter at a desired height, mount a Bracket at the desired height minus $4\frac{5}{8}$ ".

For example: If the desired height from the floor to the top of the sorter is 70", the first Bracket will be secured to the wall with the at approximately $65\frac{3}{8}$ " from the floor. See **Figure A & B**.



Step 2: Measure the distance using a common point from the top Bracket to the bottom Bracket on the Sorter. See **Figure C**.



WALL HUNG SORT MODULE INSTALLATION INSTRUCTIONS

Step 3: Install the second Bracket to the wall. Positioning should be determined by the distance that was measured in **Step 2**.

Step 4: Place the Sorter on the brackets mounted to the wall. See *Figure D*.

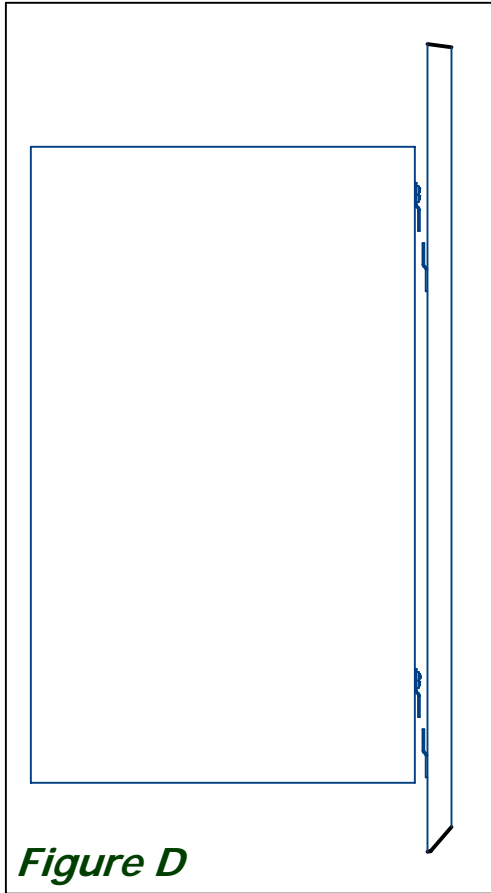


Figure D