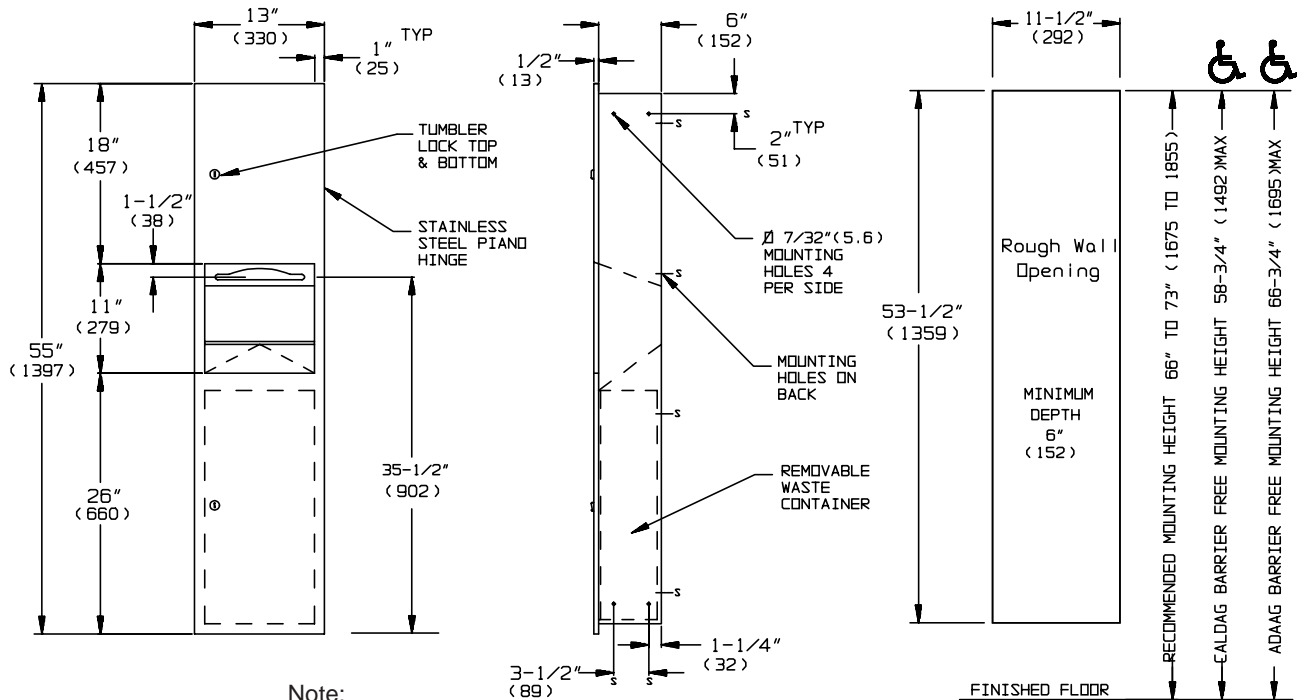


MODEL No: 64676

ISSUED: 1-87

REVISED: 5-07

RECESSED PAPER TOWEL DISPENSER AND WASTE RECEPTACLE



Note:
Dimensions are
in inches and
(millimeters)

SPECIFICATION

Recessed Paper Towel Dispenser and Waste Receptacle shall hold and dispense 800 standard multi-fold, 600 standard C-fold or 1100 standard single-fold paper towels, and shall have a waste capacity of 7 gallons (26.5 liters). An adjustable guide shall be provided to allow dispensing of single-fold, multi-fold or C-fold paper towels. Cabinet, door, dispenser and waste receptacle shall be fabricated from type 304 stainless steel alloy 18-8. All exposed surfaces shall have a N° 4 satin finish and shall be protected during shipment by PVC film easily removable after installation. Cabinet shall be 20 gauge with a 1" (25.4) wide perimeter trim to lay flush against wall and shall have no exposed fastening devices or visible seams. Full-face door shall be 18 gauge, fabricated from one piece with no miters or seams on face and shall have 1/2" (13) square returns to the wall. Door shall be attached to cabinet body with a full length 3/16" diameter (Ø4.8) stainless steel multi-staked piano hinge and shall be held closed with two (2) tumbler locks keyed alike to other ASI washroom equipment. Towel dispensing slot shall have a fully hemmed-in rolled edge for snag-free dispensing and user safety. Waste container shall have hemmed edges for safety. Structural assembly of all components shall be of welded construction. Waste receptacle door shall be attached to cabinet with a spring-loaded stainless steel piano hinge and shall have the international waste symbol on face.

INSTALLATION

Install unit in wall recess with N° 10 self-tapping screws (by others) through concealed mounting holes provided. For compliance with ADA Accessibility Guidelines, install unit so that centerline of towel dispenser slot is 48" (1219) maximum above finished floor (MAX AFF). Note that top of Rough Wall Opening (RWO) is 3/4" below top of unit.

RWO required is 11-1/2" W x 53-1/2" H x 6" D minimum (292 x 1359 x 152)

OPERATION

Paper towels are manually withdrawn through dispensing slot. A towel adapter ensures that towels feed properly until depleted. Unit will continue to feed properly when reloaded with a partial load in place. Refill dispenser by unlocking door and replacing towels for an empty or partially empty unit. Dispenser supply is replenished and waste container is emptied manually on cycles determined by maintenance needs. Locking full-face door over compartments prevents unauthorized access or removal.